

# Safe Boating in Deep Sea Shipping Navigation Areas



**Pacific Pilotage Authority Canada**

**T 604 666-6771**

**E [info@ppa.gc.ca](mailto:info@ppa.gc.ca)**

1000-1130 West Pender Street  
Vancouver, B.C. Canada V6E 4A4

*Large ships do not have brakes and can take up to 2 nautical miles to come to a stop. It is also difficult for a large ship to get out of the way of a small boat.*

There is a greater chance of large ships such as tankers and container vessels interacting with small boats and fishing vessels near pilot boarding stations, anchorages, deep sea traffic lanes and off berths within harbours. Large ships do not have brakes and can take up to 2 nautical miles to come to a stop. It is also difficult for a large ship to easily get out of the way of a small boat.



*If you cannot see the bridge windows of the large ship they cannot see you.  
If in doubt, stay clear.*



# *A ship's blind spot can extend several hundred metres ahead of the vessel.*

A small boat often does not appear on a ship's radar and might be unseen by the bridge team. Large ships with the bridge at the rear of the ship could have a blind spot that extends several hundred metres ahead of the vessel and when the vessel has cargo on deck such as containers this blind spot extends even further.

To stay safe pass no less than 500m ahead of the vessel and no less than 50m on either side.



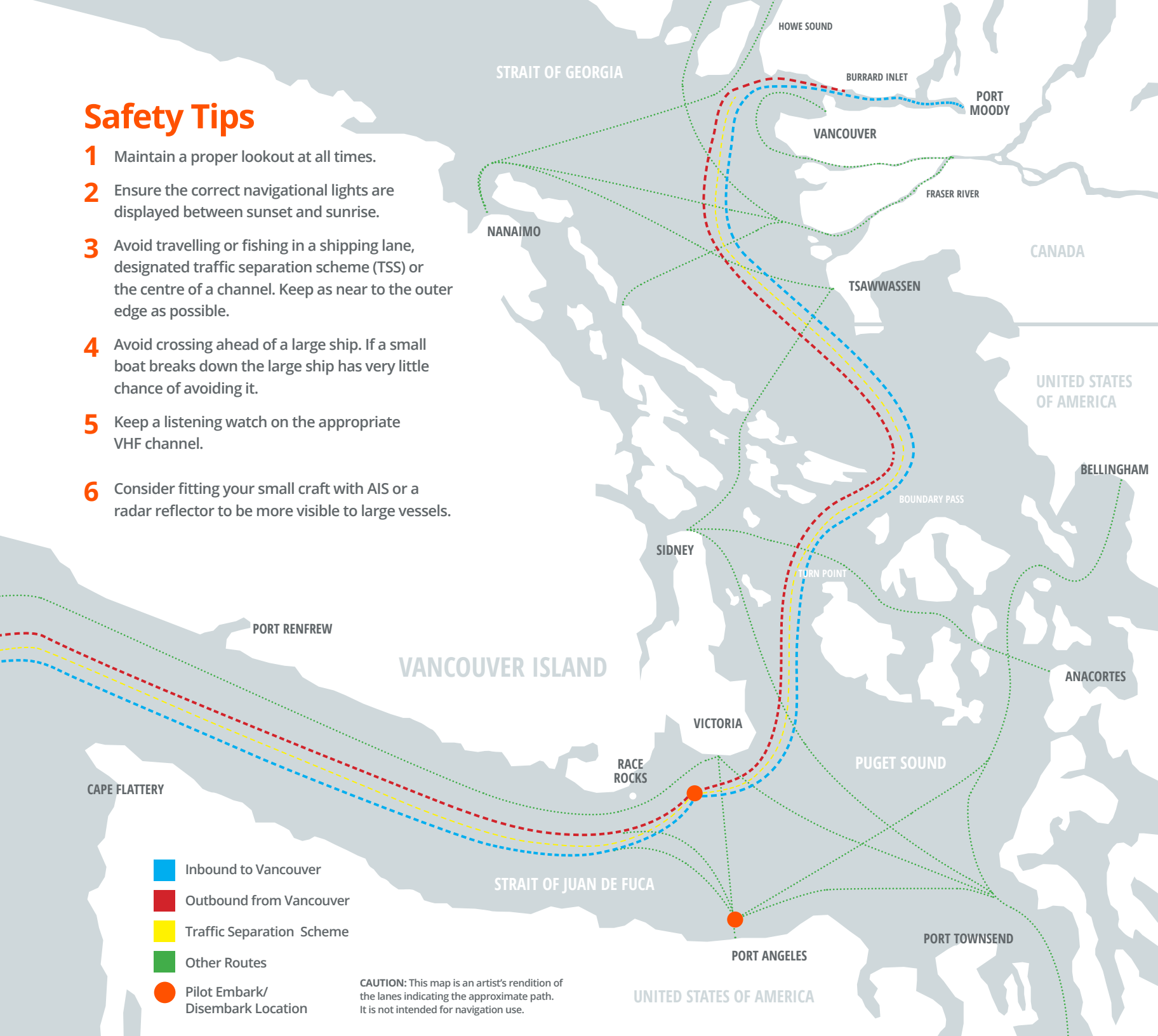
*If you cannot see the bridge windows of the large ship they cannot see you. If in doubt, stay clear.*






*Avoid this situation at all costs. If this craft breaks down there is no chance for the large ship to avoid it.*



## Safety Tips

- 1 Maintain a proper lookout at all times.
- 2 Ensure the correct navigational lights are displayed between sunset and sunrise.
- 3 Avoid travelling or fishing in a shipping lane, designated traffic separation scheme (TSS) or the centre of a channel. Keep as near to the outer edge as possible.
- 4 Avoid crossing ahead of a large ship. If a small boat breaks down the large ship has very little chance of avoiding it.
- 5 Keep a listening watch on the appropriate VHF channel.
- 6 Consider fitting your small craft with AIS or a radar reflector to be more visible to large vessels.



-  Inbound to Vancouver
-  Outbound from Vancouver
-  Traffic Separation Scheme
-  Other Routes
-  Pilot Embark/ Disembark Location

CAUTION: This map is an artist's rendition of the lanes indicating the approximate path. It is not intended for navigation use.

UNITED STATES OF AMERICA